

Key Learning

What colours are associated with Antarctica?

Why do you think that is?

How would you describe the artworks?

How do the artworks above make you feel?

What do you think these artworks sound like?

How will you create effect with different materials?

What colours will you use to add detail?

How will you use texture?

Year 2/3 Art – Arctic explorers Collage



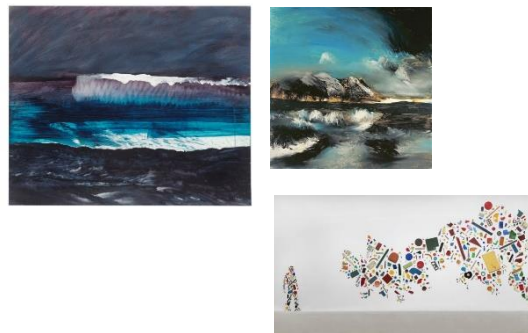
Morda CE Primary School

Tony Cragg and Sir Sidney Nolan

Tony Cragg is a British born sculptor who was known in his early career for creating colourful collages from ordinary construction materials and household objects that had been thrown away. He found these objects on the streets and rubbish dumps in West London.

In January 1964 Nolan visited Antarctica for eight days. Travelling by helicopter between research stations, including one at the South Pole, Nolan recorded his impressions in watercolour on the 200 blank postcards.

Inspiration



Key Vocabulary

texture	Is the material rough, smooth or hard?
colour	The brightness of colour, choice of colour used for effect.
modern	Most recent ideas in art
collage	A picture in which various materials or objects, for example paper, cloth, or photographs, are stuck onto a larger surface
imagination	Forming pictures in your mind
memory	Remembering information
detail	The small features of something that you only notice when you look carefully