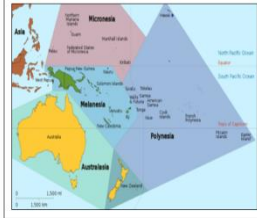


Key Learning

Where is Australia? Can you locate Australia on a map and its surrounding countries and oceans?



What are the main cities in Australia?

What is the capital city of Australia?

Melbourne

Brisbane

Perth

Sydney

Canberra

What natural geographical features might we see in Australia?

The Uluru and The Great Barrier Reef

Can you use an aerial image to locate landmarks?



Can you compare Australia to other places we have studied?

Liverpool, Spain, Antarctica, Morda

Daffodils Year 2 and 3 Australia



Morda CE Primary School

Anangu culture

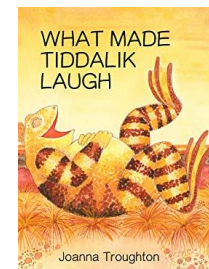
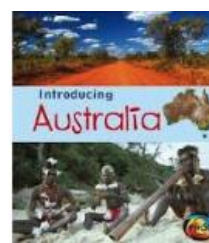
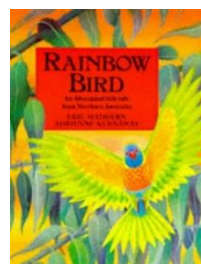
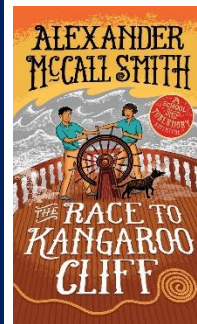
<https://parksaustralia.gov.au/uluru/discover/culture/>

The Lungkata story – the blue tongued lizard

The Uluru climb closure



Good Read



Library service topic books
Selection of both fiction and non fiction

Key Vocabulary

Continent,

Group of countries, which can have borders of mountains, sea or land.

Oceania,

A region where Australia is located.

Great Barrier reef,

The Great Barrier Reef is the world's largest coral reef system

Uluru,

Uluru, or Ayers Rock, is a massive sandstone monolith in the heart of the Northern Territory's

Outback,

The Outback is the colloquial name for the vast, unpopulated and mainly arid areas in Australia

compass direction, N S E W,